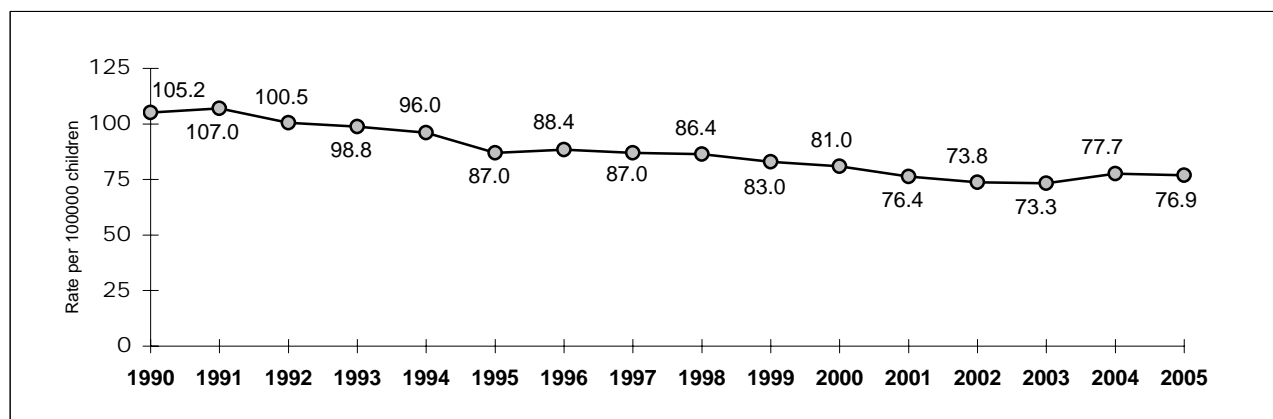


2005 CHILD DEATHS IN NORTH CAROLINA

Trend in Rate of Child Deaths 1990-2005*
Ages Birth through 17 Years



Cause of Death	Average Annual Number 2001-2005	Number in 2004	Number in 2005	Percent Change From Last Year
Birth defects	209	219	208	-5
Other birth-related conditions	553	575	580	1
Sudden infant death syndrome	98	103	105	2
Illnesses	286	286	293	2
Unintentional injuries	279	313	273	-13
Motor vehicle injuries	170	192	155	-19
Bicycle injuries	7	6	7	17
Injuries caused by fire	16	19	13	-32
Drowning	22	13	21	62
Falls	3	4	3	-25
Poisoning	13	17	18	6
Other unintentional injuries	48	62	56	-10
Homicide	52	51	78	53
Suicide	24	23	29	26
All other	49	37	48	30
TOTAL	1,551	1,607	1,614	0.4

Age Group	Average 2001-2005	Number in 2004	Number in 2005	Percent Change 2004 to 2005
Infant	1,011	1,050	1,077	3
1-4	138	140	141	1
5-9	89	90	86	-4
10-14	120	117	111	-5
15-17	193	210	199	-5

	Total	Under 18
2004	8,541,263	2,069,519
2005	8,682,066	2,097,945
% change	1.6	1.4

Data reflect state residents.

Please see Technical Notes at <http://www.schs.state.nc.us/SCHS/healthstats/deaths/cdtech2005.html>

* Child death rates for 1990-1999 are not the same as published in some previous reports due to revised population estimates.

Created by N.C. Div. of Public Health - Women's and Children's Health Section in conjunction with the State Center for Health Statistics.