

## I. INTRODUCTION

This volume is the 91st annual vital statistics report of the State of North Carolina. It is intended to serve as a basic resource to those individuals, institutions, and agencies delivering and/or planning health services for the citizens of North Carolina.

The tables of this report show annual frequencies, annual rates, and 5-year rates for the state, six Perinatal Care Regions, and the 100 counties of North Carolina. Due to incompleteness of the data and potential problems with accuracy, information for cities is not shown. The reader may obtain vital statistics for cities in North Carolina by special request to the Center.

Section II contains maps depicting county data. Sections III-VI contain description and discussion of the terms and procedures underlying the tabular and graphical data presented.

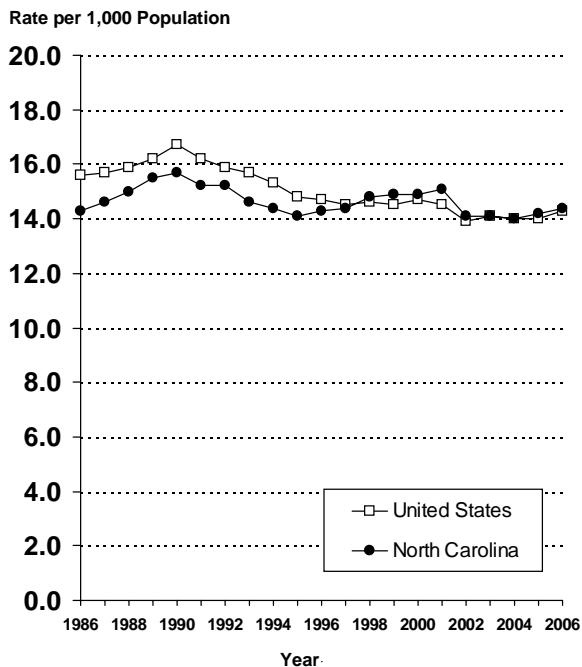
Other publications available through this office are described on the back of the front cover. If you want copies of these publications, contact us at (919) 733-4728 or address correspondence to:

State Center for Health Statistics  
Department of Health and Human Services  
1908 Mail Service Center  
Raleigh, North Carolina 27699-1908

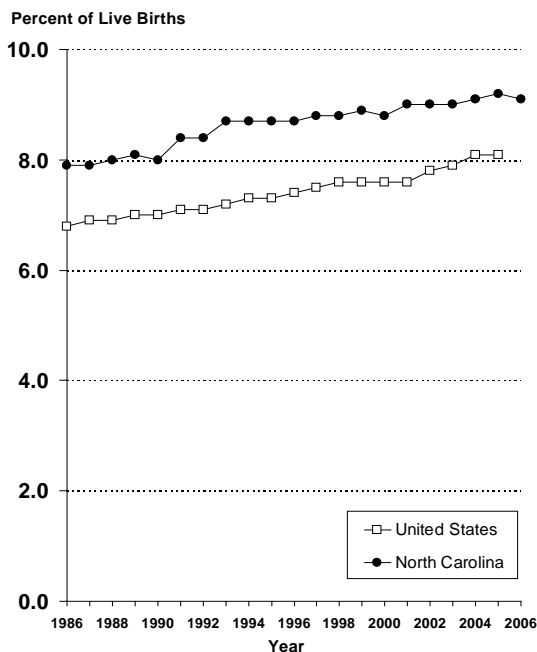
**Caution:** Any percentage or rate with a small number of events in the numerator will have substantial random variation over time. A rule of thumb is that any percentage or rate with fewer than 20 events in the numerator may be subject to serious random error. Therefore, many of the percentages and rates in this volume should be interpreted with caution.

Trends depicted in the graphs are for North Carolina and the United States. Data for the U.S. are from the National Center for Health Statistics.

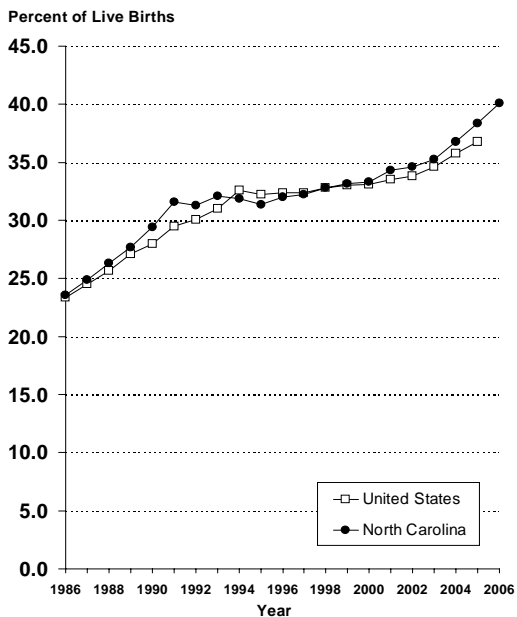
### LIVE BIRTHS 1986 - 2006



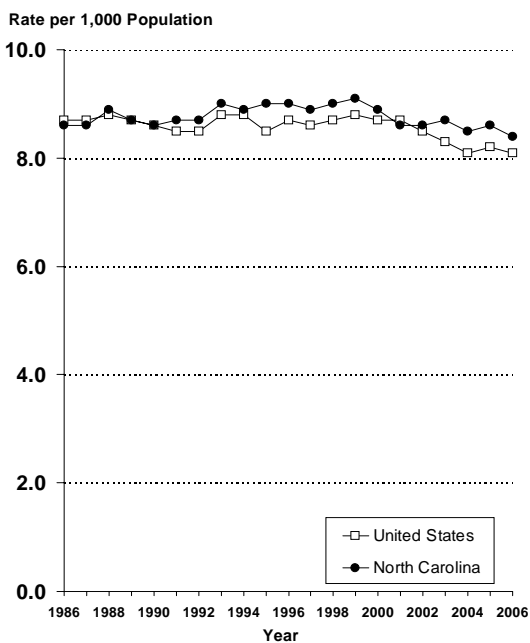
### LOW-WEIGHT BIRTHS 1986 - 2006



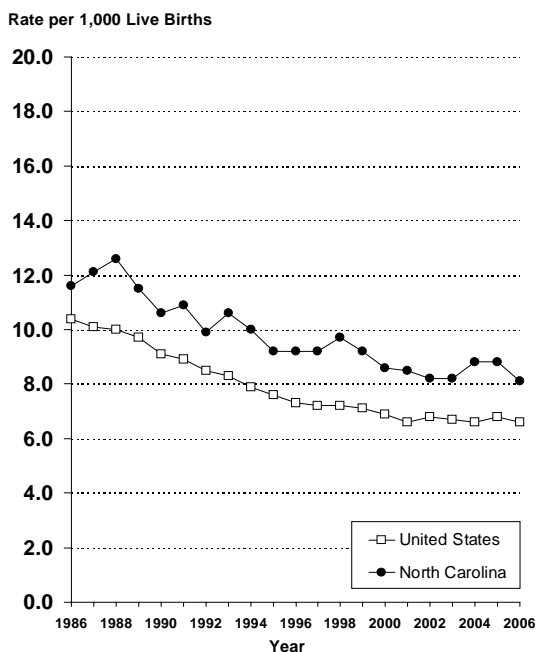
### OUT-OF-WEDLOCK LIVE BIRTHS 1986 - 2006



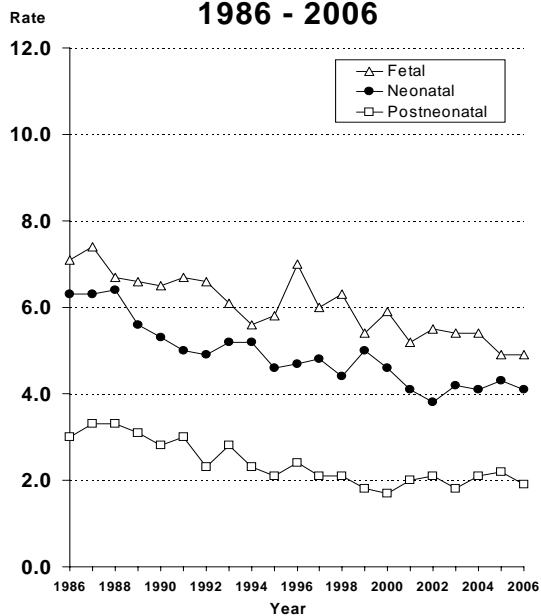
## TOTAL MORTALITY 1986 - 2006



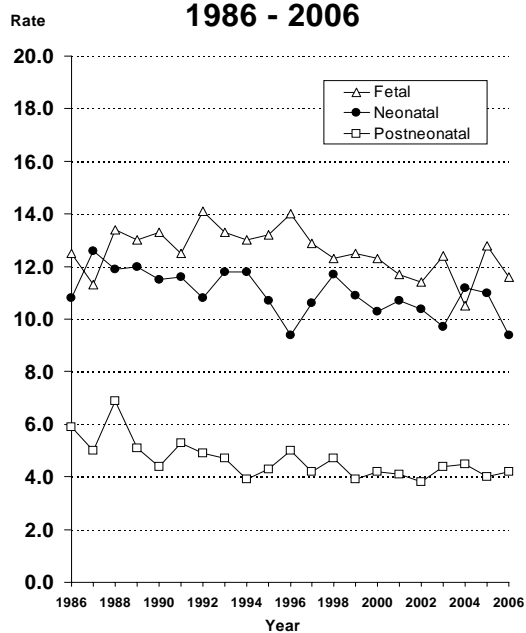
## INFANT MORTALITY 1986 - 2006



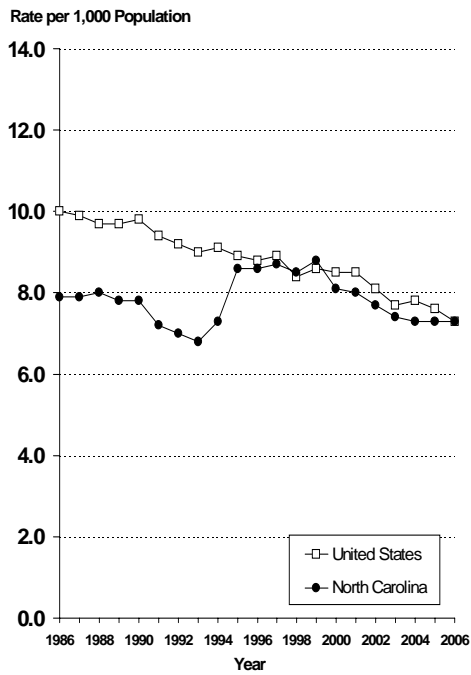
## WHITE PERINATAL AND POSTNEONATAL MORTALITY NORTH CAROLINA 1986 - 2006



## MINORITY PERINATAL AND POSTNEONATAL MORTALITY NORTH CAROLINA 1986 - 2006



## MARRIAGE RATES 1986 - 2006



## DIVORCE RATES 1986 - 2006

