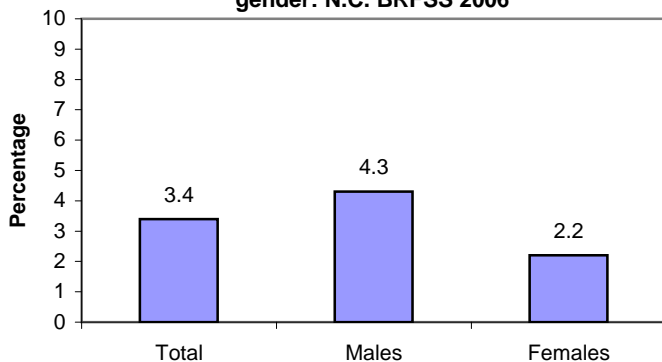


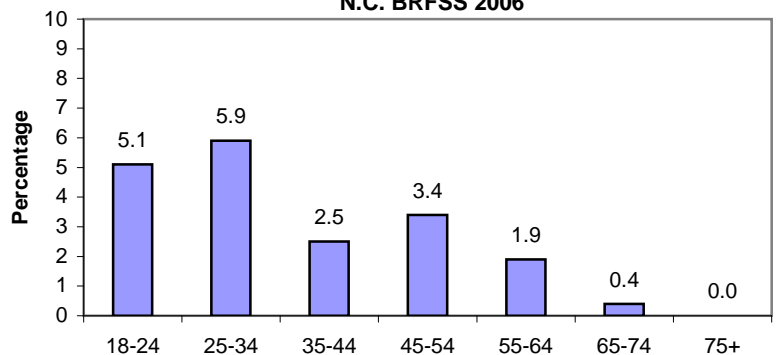
SURVEILLANCE UPDATE

Drinking and driving in the past 30 days: 2006 N.C. Behavioral Risk Factor Surveillance System

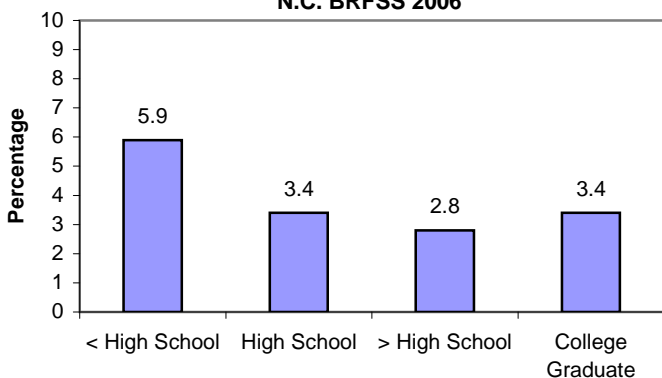
Percentage of people in N.C. who reported drinking and driving more than once in the past 30 days, by gender: N.C. BRFSS 2006



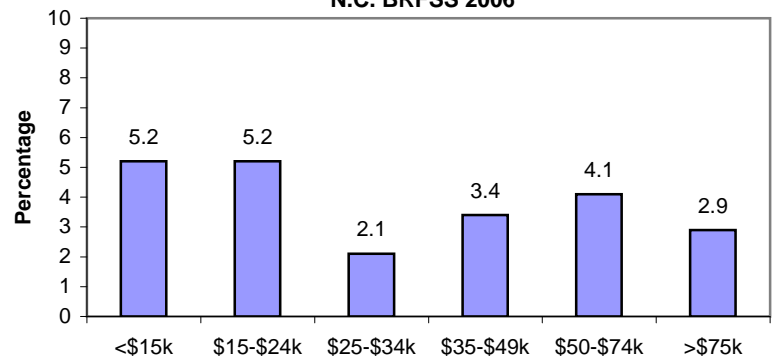
Percentage of people in N.C. who reported drinking and driving more than once in the past 30 days, by age group: N.C. BRFSS 2006



Percentage of people in N.C. who reported drinking and driving more than once in the past 30 days, by educational attainment: N.C. BRFSS 2006



Percentage of people in N.C. who reported drinking and driving more than once in the past 30 days, by income: N.C. BRFSS 2006



Weighted to provide estimates representative of the adult non-institutionalized population; people who reported having driven one or more times after drinking alcohol in the past 30 days. Specific data on 95 percent confidence intervals is at the N.C. BRFSS website: www.schs.state.nc.us/SCHS/brfss.

The N.C. Behavioral Risk Factor Surveillance System (N.C. BRFSS) provides a critical source of public health data for understanding the scope of the injury-related problems and measuring progress toward overall statewide goals. N.C. BRFSS is a comprehensive telephone survey of adults ages 18 and older. The sample size for the 2006 N.C. BRFSS was nearly 16,000. Every year a core set of injury-related questions are asked. In 2006, four injury-related questions were asked on topics regarding falls, seatbelt usage, and drinking and driving. The sampling scheme has been designed to produce estimates for local levels (22 counties and 13 regions) and for special populations such as Native Americans and Spanish-speaking and English-speaking Hispanics. See the N.C. BRFSS website for more information, specific details on item responses, and data limitations: www.schs.state.nc.us/SCHS/brfss.