

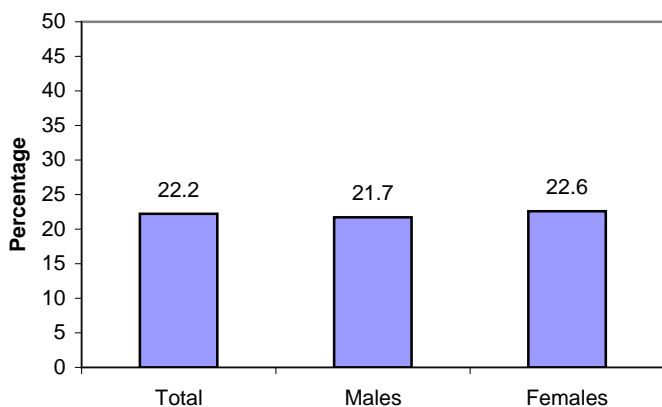
# SURVEILLANCE UPDATE



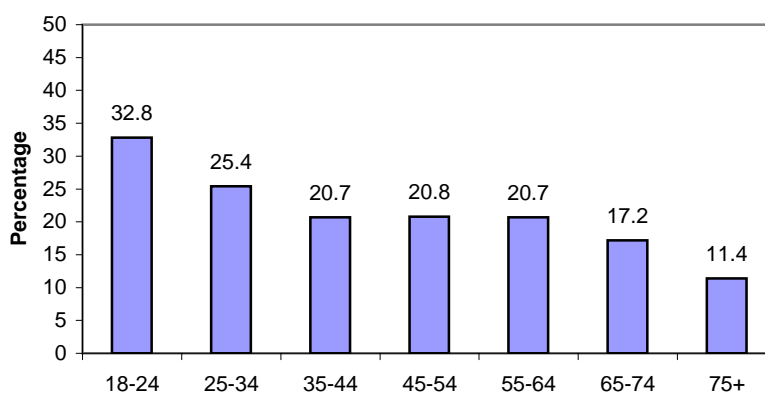
North Carolina Tobacco Prevention and Control Branch / June 2006

## "Asked Stranger in Past Year Not to Smoke Around You": 2005 N.C. Behavioral Risk Factor Surveillance System

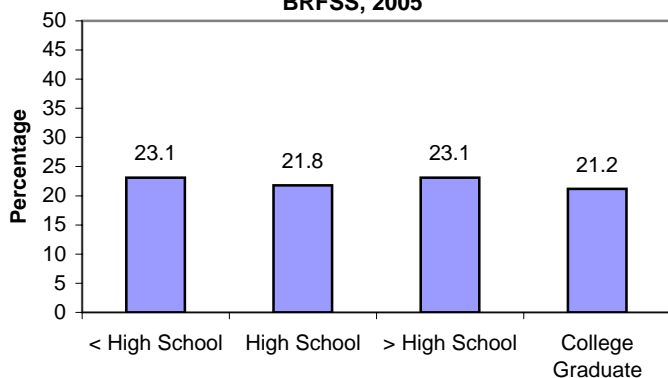
Percentage of N.C. adults reporting ever asking a stranger to not smoke to avoid exposure to secondhand smoke, by gender: N.C. BRFSS, 2005



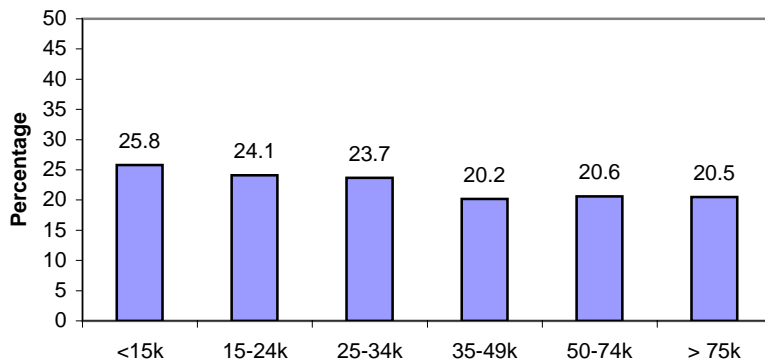
Percentage of N.C. adults reporting ever asking a stranger to not smoke to avoid exposure to secondhand smoke, by age group: N.C. BRFSS, 2005



Percentage of N.C. adults reporting ever asking a stranger to not smoke to avoid exposure to secondhand smoke, by educational attainment: N.C. BRFSS, 2005



Percentage of N.C. adults reporting ever asking a stranger to not smoke to avoid exposure to secondhand smoke, by income: N.C. BRFSS, 2005



Weighted to provide estimates representative of the adult non-institutionalized population; persons aged 19 years and older. Specific data on 95% confidence intervals is at the N.C. BRFSS website.

The N.C. Behavioral Risk Factor Surveillance System (N.C. BRFSS) provides a critical source of public health data for understanding the scope of the tobacco problem and measuring progress toward overall goals. N.C. BRFSS is a comprehensive telephone survey of adults ages of 18 and older. The sample size for the 2005 N.C. BRFSS was 17,261. Every year a core set of tobacco-related questions are asked. In addition, tobacco modules on topics such as other tobacco products and counseling can be added. In 2005, 18 tobacco-related questions were asked on topics ranging from current smoking status to support for increasing the cigarette excise tax. The sampling scheme has been designed to produce estimates for local levels (22 counties and 13 regions) and for special populations such as Native Americans and Spanish-speaking and English-speaking Hispanics. See the N.C. BRFSS website for more information, specific details on item responses and data limitations: [www.schs.state.nc.us/SCHS/BRFSS/](http://www.schs.state.nc.us/SCHS/BRFSS/).