

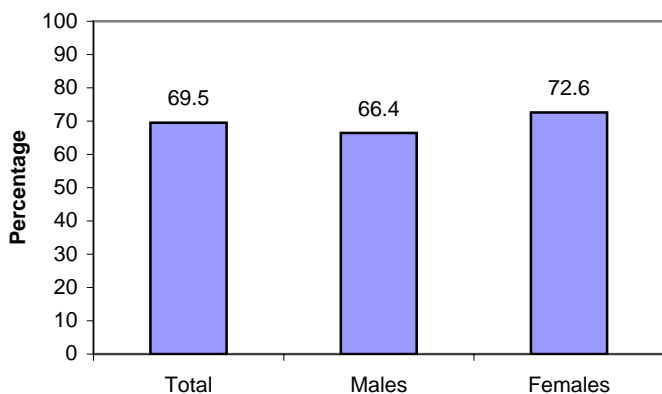
SURVEILLANCE UPDATE



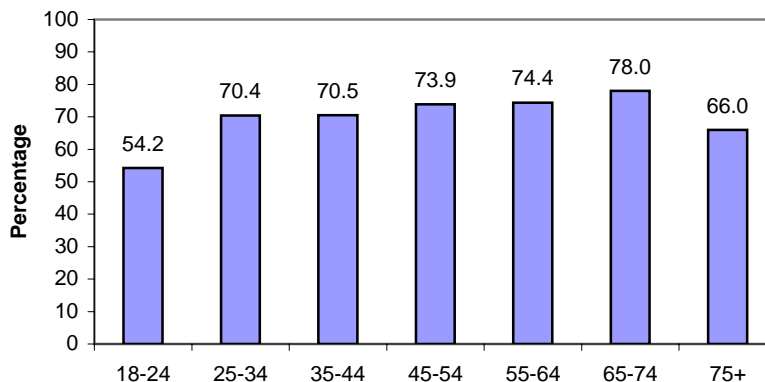
North Carolina Tobacco Prevention and Control Branch / June 2006

Health Professional Advised You to Quit: 2005 N.C. Behavioral Risk Factor Surveillance System

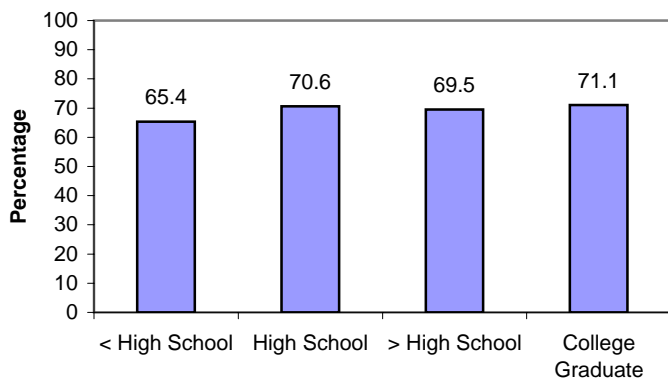
Percentage of N.C. adults who report health professional advised them to quit smoking, by gender: N.C. BRFSS, 2005



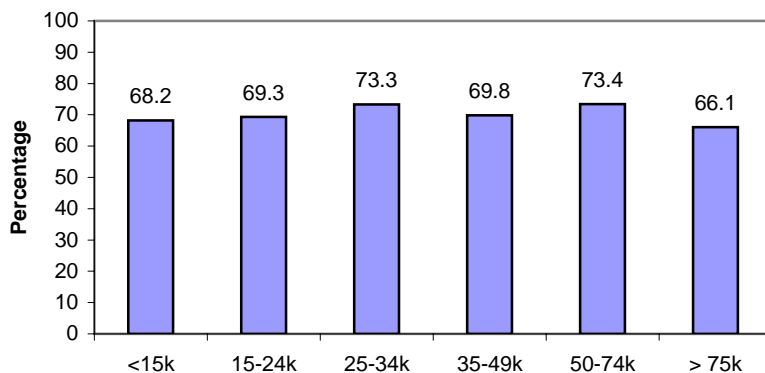
Percentage of N.C. adults who report health professional advised them to quit smoking, by age group: N.C. BRFSS, 2005



Percentage of N.C. adults who report health professional advised them to quit smoking, by educational attainment: N.C. BRFSS, 2005



Percentage of N.C. adults who report health professional advised them to quit smoking, by income: N.C. BRFSS, 2005



Weighted to provide estimates representative of the adult non-institutionalized population; persons aged 19 years and older who reported smoking at least 100 cigarettes and smoke every day or some days AND had visited a health professional in the past 12 months. Specific data on 95% confidence intervals is at the N.C. BRFSS website.

The N.C. Behavioral Risk Factor Surveillance System (N.C. BRFSS) provides a critical source of public health data for understanding the scope of the tobacco problem and measuring progress toward overall goals. N.C. BRFSS is a comprehensive telephone survey of adults ages of 18 and older. The sample size for the 2005 N.C. BRFSS was 17,261. Every year a core set of tobacco-related questions are asked. In addition, tobacco modules on topics such as other tobacco products and counseling can be added. In 2005, 18 tobacco-related questions were asked on topics ranging from current smoking status to support for increasing the cigarette tax. The sampling scheme has been designed to produce estimates for local levels (22 counties and 13 regions) and for special populations such as Native Americans and Spanish-speaking and English-speaking Hispanics. See the N.C. BRFSS website for more information and specific details on item responses and data limitations: www.schs.state.nc.us/SCHS/BRFSS/.