

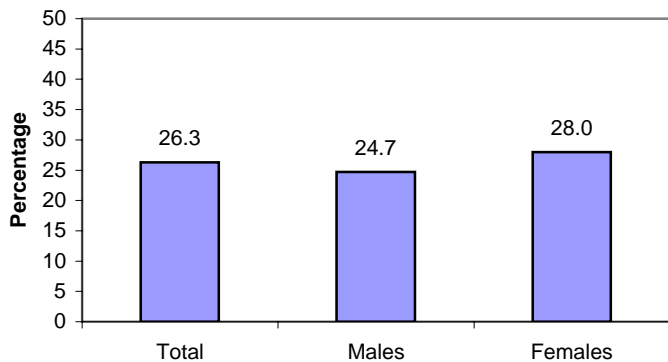
SURVEILLANCE UPDATE

North Carolina Tobacco Prevention and Control Branch / June 2006

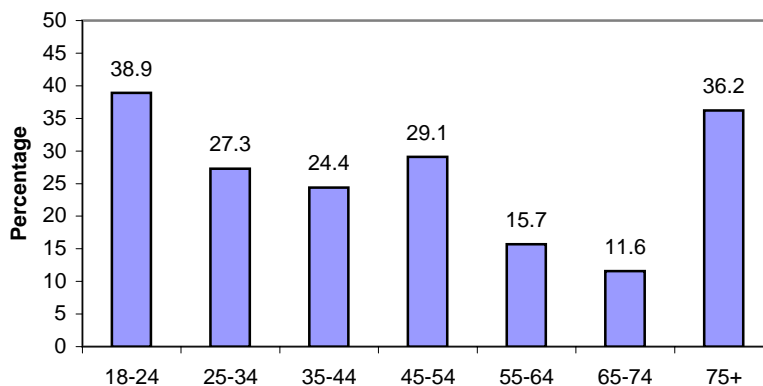


Lives with One or More Smokers: 2005 N.C. Behavioral Risk Factor Surveillance System

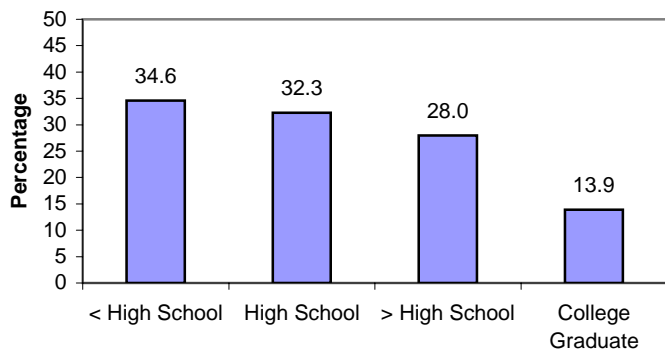
Percentage of N.C. adults reporting that they live with one or more adult smokers, by gender: N.C. BRFSS 2005



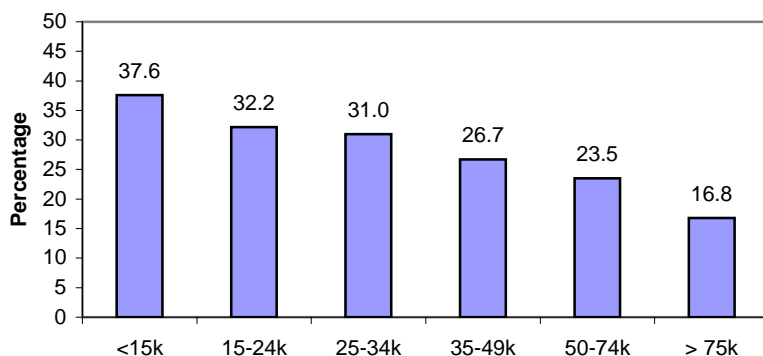
Percentage of N.C. adults reporting that they live with one or more adult smokers, by age group: N.C. BRFSS, 2005



Percentage of N.C. adults reporting that they live with one or more adult smokers, by educational attainment: N.C. BRFSS, 2005



Percentage of N.C. adults reporting that they live with one or more adult smokers, by income: N.C. BRFSS, 2005



Weighted to provide estimates representative of the adult non-institutionalized population. Specific data on 95% confidence intervals is at the N.C. BRFSS website.

The N.C. Behavioral Risk Factor Surveillance System (N.C. BRFSS) provides a critical source of public health data for understanding the scope of the tobacco problem and measuring progress toward overall goals. N.C. BRFSS is a comprehensive telephone survey of adults ages 18 and older. The sample size for the 2005 N.C. BRFSS was 17,261. Every year a core set of tobacco-related questions are asked. In addition, tobacco modules on topics such as other tobacco products and counseling can be added. In 2005, 18 tobacco-related questions were asked on topics ranging from current smoking status to support for increasing the cigarette tax. The sampling scheme has been designed to produce estimates for local levels (22 counties and 13 regions) and for special populations such as Native Americans and Spanish-speaking and English-speaking Hispanics. See the N.C. BRFSS website for more information, specific details on item responses and data limitations: www.schs.state.nc.us/SCHS/BRFSS/.