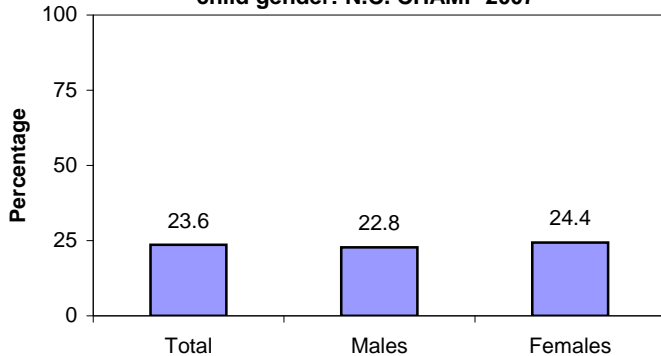


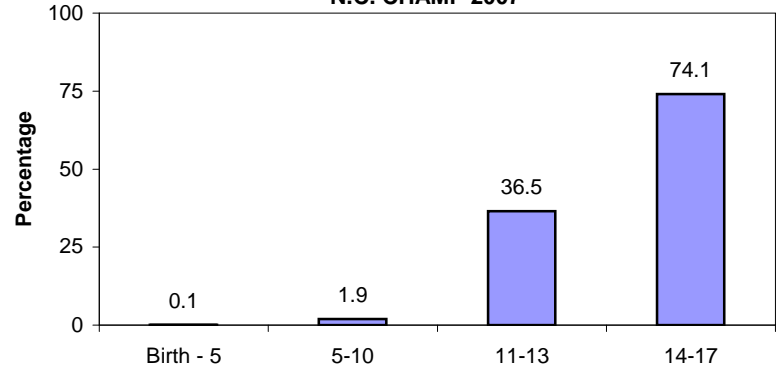
# SURVEILLANCE UPDATE

## Child Unsupervised in the past month: 2007 Child Health Assessment & Monitoring Program (CHAMP)

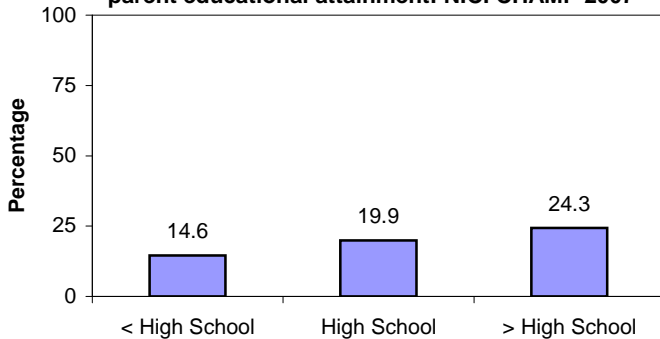
Percentage of N.C. parents who reported that in the past month their child had been left alone for more than one hour without any adult supervision, by child gender: N.C. CHAMP 2007



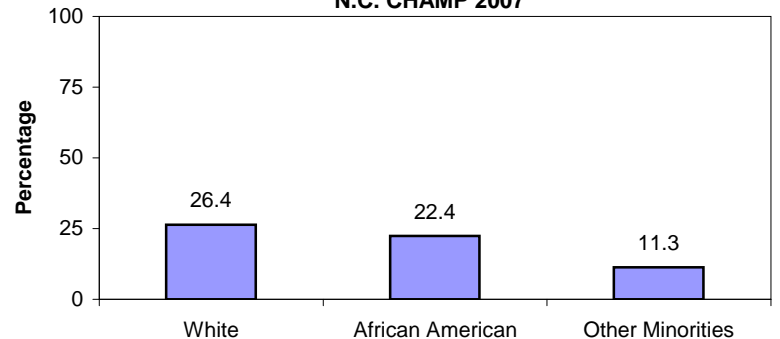
Percentage of N.C. parents who reported that in the past month their child had been left alone for more than one hour without any adult supervision, by child age group: N.C. CHAMP 2007



Percentage of N.C. parents who reported that in the past month their child had been left alone for more than one hour without any adult supervision, by parent educational attainment: N.C. CHAMP 2007



Percentage of N.C. parents who reported that in the past month their child had been left alone for more than one hour without any adult supervision, by child race/ethnicity: N.C. CHAMP 2007



Weighted to provide estimates representative of the adult non-institutionalized parent population; parents reporting that in the past month their child had been left alone for more than one hour without any adult supervision. Specific data on 95 percent confidence intervals is at the N.C. CHAMP website: [www.schs.state.nc.us/SCHS/champ](http://www.schs.state.nc.us/SCHS/champ).

The N.C. Child Health Assessment and Monitoring Program (CHAMP) survey was first developed in the fall of 2004 and implemented in January 2005. CHAMP is the first survey of its kind in North Carolina to measure the health characteristics of children from birth to age 17. CHAMP is a follow-back survey to the BRFSS (Behavioral Risk Factor Surveillance System) which is a telephone survey of adults, ages 18 and older. All adult respondents with children living in their household are invited to participate in the CHAMP survey. One child is randomly selected from the household and the adult most knowledgeable about the health of the selected child is interviewed in a follow-up survey. All questions about the selected child are answered only by the most knowledgeable adult. CHAMP surveys are revised each year to meet the child health surveillance needs of North Carolina. In 2007, nine questions on the topic of child safety and injury were asked of nearly 2,700 parents. Results shown above are based on data from 2007. See the N.C. CHAMP website for more information and data limitations: [www.schs.state.nc.us/SCHS/champ](http://www.schs.state.nc.us/SCHS/champ).